

Bell Hydromatics

Pressure Control Valves

H/HC Type Pressure control Valves



Features:

- These pressure control valves can be actuated by internal stroke external pilot pressure.
- For reverse flow integral check valves are available.

Types of Valves:

- Counter balance/Sequence/with check valves

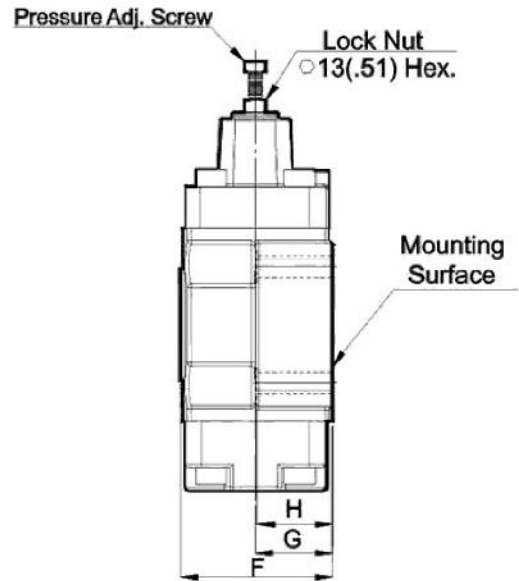
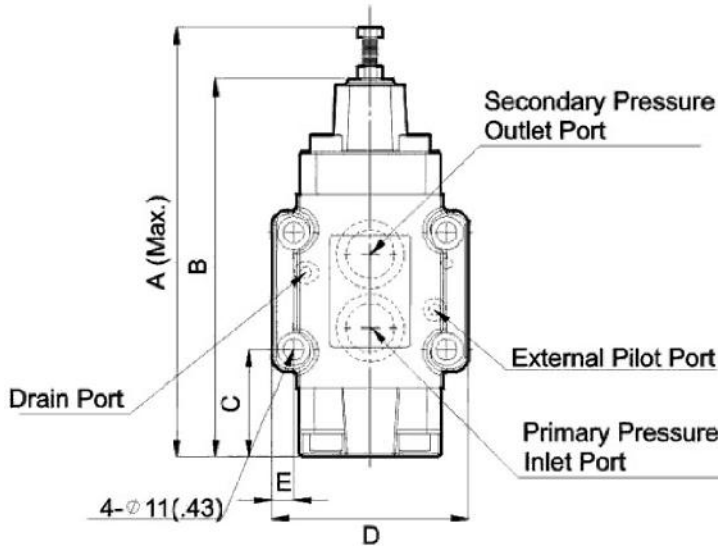
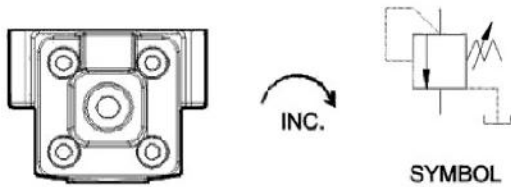
Ordering Code

HC	T	03	C	3	20
Series	Type of Mounting	Valve Size	Pressure Range	Valve Type	Design No.
H: H type Pressure Control Valves HG/HT	G Subplate Mounting	03:(3/8") ISO 5781-AG-06-2-A	L:2.5~4.5 bar (35~65 PSI) M:4.5~9bar (65~125 PSI)	Type 1: Counterbalance Valve Internal Pilot Internal Drain	20(G) DIN 912 bolts
		06:(3/4") ISO 5781-AG-08-2-A	N: 9~18 bar (125~250 PSI) A: 18~35 bar (250~500 PSI)	Type 2: Sequence and Check Valve Internal Pilot External Drain	2090(G) UNC bolts (North America)
HC: HC Type Pressure Control Valves HCG/HCT	T Threaded Connection	10:(1-1/4") ISO 5781-AJ-10-2-A	B:35~70 bar (500~1000 PSI) C: 70~140 bar (1000~2000 PSI)	Type 3: Sequence and Check Valve External Pilot-External Drain	20(T) PT Connection 2090(T)
			H:140~210 bar (2000~3000 PSI)	Type 4: Counterbalance Valve External Pilot-Internal Drain	NPT Connection (North America)

H Type Pressure Control Valves(Sub-Plate Type)

Valve Specifications & Attachment

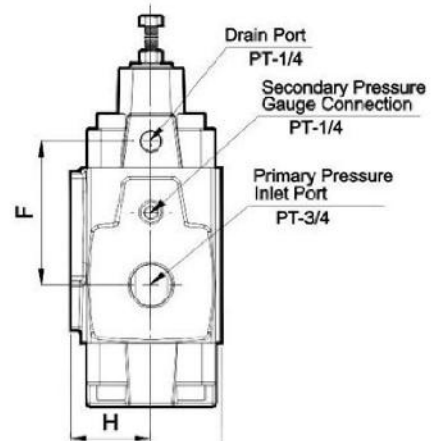
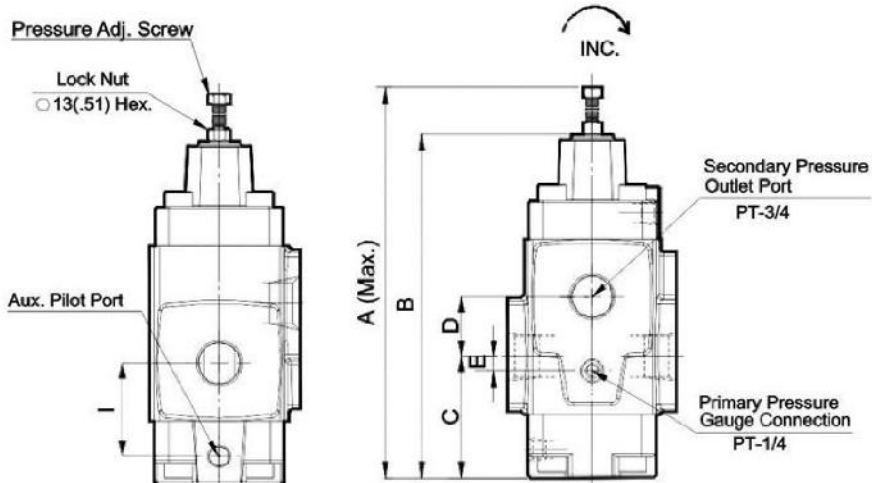
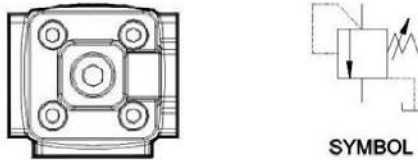
Model	HG-03	HG-06	HG-10
Flow Rating	50 lpm (13.2 gpm)	125 lpm (33 gpm)	250 lpm (66 gpm)
Max. Pressure	210 bar (3000 psi)	210 bar (3000 psi)	210 bar (3000 psi)
Weight kg(lbs.)	4.0 (8.8)	6.1 (13.4)	11.0 (24.2)
CODE:20	M10 X50LgX4pcs	M10 X50LgX4pcs	M10X50LgX6pcs
CODE:2090	3/8-16UNCX2LgX4pcs	3/8-16UNCX2LgX4pcs	3/8-16UNCX2LgX6pcs
Surface O-Ring	P9X2pc, P18X2pc	P9X2pc, P29X2pc	P9X2pc, P38X2pc
ISO Mounting	5781-AG-06-2-A	5781-AG-08-2-A	5781-AJ-10-2-A



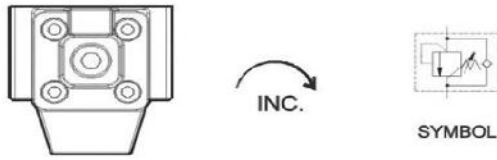
H Type Pressure Control Valves(Threaded Type)

Valve Specifications & Attachment

Model	HT-03	HT-06	HT-10
Flow Rating	50 lpm (13.2 gpm)	125 lpm (33 gpm)	250 lpm (66 gpm)
Max. Pressure	210 bar (3000 psi)	210 bar (3000 psi)	210 bar (3000 psi)
Weight kg(lbs.)	3.7 (8.2)	6.2 (13.7)	12.0 (26.4)
CODE:20	3/8 PT	3/4 PT	1 1/4 PT
CODE:2090	3/8 NPT	3/4 NPT	1 1/4 NPT

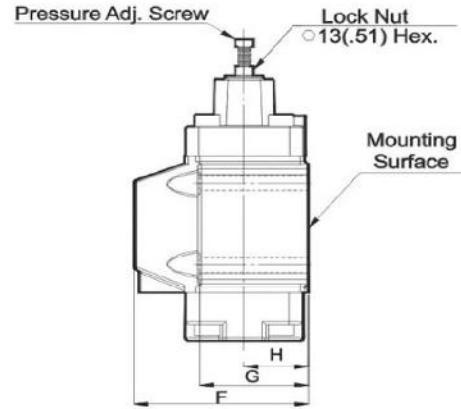
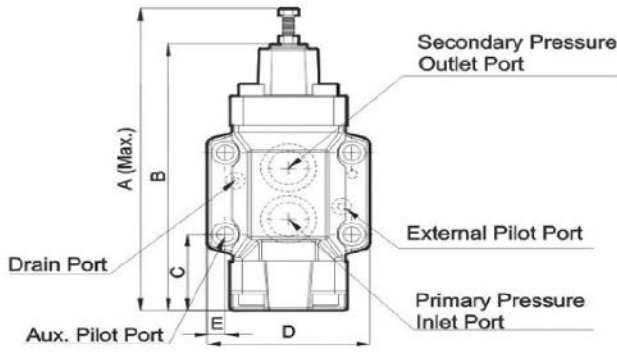


HC Type Pressure Control Valves(Sub Plate Type)

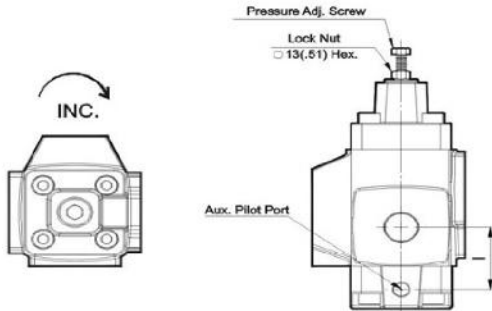


Valve Specifications & Attachment

Model	HCG-03	HCG-06	HCG-10
Flow Rating	50 lpm (13.2 gpm)	125 lpm (33 gpm)	250 lpm (66 gpm)
Max. Pressure	210 bar (3000 psi)	210 bar (3000 psi)	210 bar (3000 psi)
Weight kg(lbs.)	4.8 (10.6)	7.4 (16.3)	13.8 (30.4)
CODE:20	M10 X70LgX4pcs	M16 X80LgX4pcs	M10X90LgX8pcs
CODE:2090	3/8-16UNCX2-3/4LgX4pcs	3/8-16UNCX3-1/4LgX4pcs	3/8-16UNCX3-1/2LgX8pcs
Surface O-Ring	P9X2pc, P18X2pc	P9X2pc, P29X2pc	P9X2pc, P38X2pc
ISO Mounting	5781-AG-06-2-A	5781-AG-08-2-A	5781-AJ-10-2-A

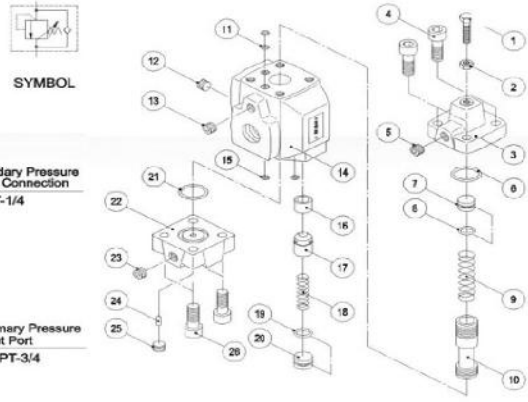
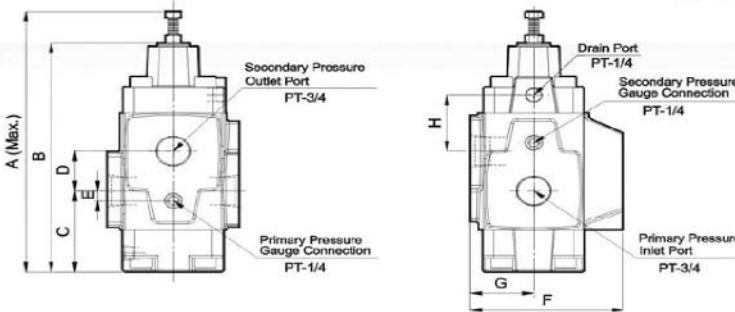


HC Type Pressure Control Valves(Threaded Type)



Valve Specifications & Attachment

Model	HCT-03	HCT-06	HCT-10
Flow Rating	50 lpm (13.2 gpm)	125 lpm (33 gpm)	250 lpm (66 gpm)
Max. Pressure	210 bar (3000 psi)	210 bar (3000 psi)	210 bar (3000 psi)
Weight kg(lbs.)	4.1 (9.0)	7.1 (15.6)	13.8 (30.4)
CODE:20	3/8 PT	3/4 PT	1 1/4 PT
CODE:2090	3/8 NPT	3/4 NPT	1 1/4 NPT



Sub-plate Specifications

Valve Model Numbers	Japanese Standard "JIS"		European Design Standard		N.American Design Standard		Approx. Mass kg (lbs.)
	Sub-plate Model Numbers	Thread Size	Sub-plate Model Numbers	Thread Size	Sub-plate Model Numbers	Thread Size	
HG HCG -03-***	HGM-03-20	Rc 3/8	HGM-03-2080	3/8 BSP.F	HGM-03-2090	3/8 NPT	1.6 (3.5)
	HGM-03X-20	Rc 1/2	HGM-03X-2080	1/2 BSP.F	HGM-03X-2090	1/2 NPT	1.6 (3.5)
HG HCG -03-***-P	HGM-03-P-20	Rc 3/8	HGM-03-P-2080	3/8 BSP.F	HGM-03-P-2090	3/8 NPT	2.0 (4.4)
	HGM-03X-P-20	Rc 1/2	HGM-03X-P-2080	1/2 BSP.F	HGM-03X-P-2090	1/2 NPT	2.0 (4.4)
HG HCG -06-***	HGM-06-20	Rc 3/4	HGM-06-2080	3/4 BSP.F	HGM-06-2090	3/4 NPT	2.4 (5.3)
	HGM-06X-20	Rc 1	HGM-06X-2080	1 BSP.F	HGM-06X-2090	1 NPT	3.0 (6.6)
HG HCG -06-***-P	HGM 06 P 20	Rc 3/4	HGM 06 P 2080	3/4 BSP.F	HGM 06 P 2090	3/4 NPT	2.4 (5.3)
	HGM-06X-P-20	Rc 1	HGM-06X-P-2080	1 BSP.F	HGM-06X-P-2090	1 NPT	3.0 (6.6)
HG HCG -10-***	HGM-10-20	Rc 1-1/4	HGM-10-2080	1-1/4 BSP.F	HGM-10-2090	1-1/4 NPT	4.8 (10.6)
	HGM-10X-20	Rc 1-1/2	HGM-10X-2080	1-1/2 BSP.F	HGM-10X-2090	1-1/2 NPT	5.7 (12.6)
HG HCG -10-***-P	HGM-10-P-20	Rc 1-1/4	HGM-10-P-2080	1-1/4 BSP.F	HGM-10-P-2090	1-1/4 NPT	4.8 (10.6)
	HGM-10X-P-20	Rc 1-1/2	HGM-10X-P-2080	1-1/2 BSP.F	HGM-10X-P-2090	1-1/2 NPT	5.7 (12.6)